

ALABAMA 9-1-1 BOARD USER CONFERENCE



ALABAMA 9-1-1 BOARD

UPDATES

TEXT **KJT5**

OR

409-405-5080

ALABAMA 9-1-1 BOARD
USER CONFERENCE



=

DHBNP

ALABAMA 9-1-1 BOARD

STAFF



Leah Missildine
Executive Director
Leah@al911board.com



Adam Brown
Deputy Director
Adam@al911board.com



Anderson Brooms
GIS Program Manager
Anderson@al911board.com



Laura Ehrhart
E & O Program Manager
Laura@al911board.com



Michelle Peel
Program Coordinator
Michelle@al911board.com



Daniel Hipps
E & O Technical Specialist
Daniel@al911board.com



Jessi McKinley
E & O admin intern
Jessi@al911board.com



**ALABAMA 9-1-1 BOARD
USER CONFERENCE**



ALABAMA 9-1-1 BOARD

UPDATES

ALABAMA 9-1-1 BOARD USER CONFERENCE

TOGETHER FOR TOMORROW, ADVANCING 911 EXCELLENCE

Legacy 911 Cost Reimbursement Program

- Reimbursement of certain legacy 911 and database costs
- Due every 10th of the month for payment at the end of the month



PST Certification Course Reimbursement Program

- Reimbursement of certain legacy 911 and database costs
- Due every 10th of the month for payment at the end of the month



ALABAMA 9-1-1 BOARD USER CONFERENCE



ALABAMA 9-1-1 BOARD

UPDATES

PST CERTIFICATION RULE

30
DAYS

180
DAYS

100
PERCENT

12
HOURS



**ALABAMA 9-1-1 BOARD
USER CONFERENCE**

***my*Alabama911**
ALABAMA 911 BOARD CENTRAL





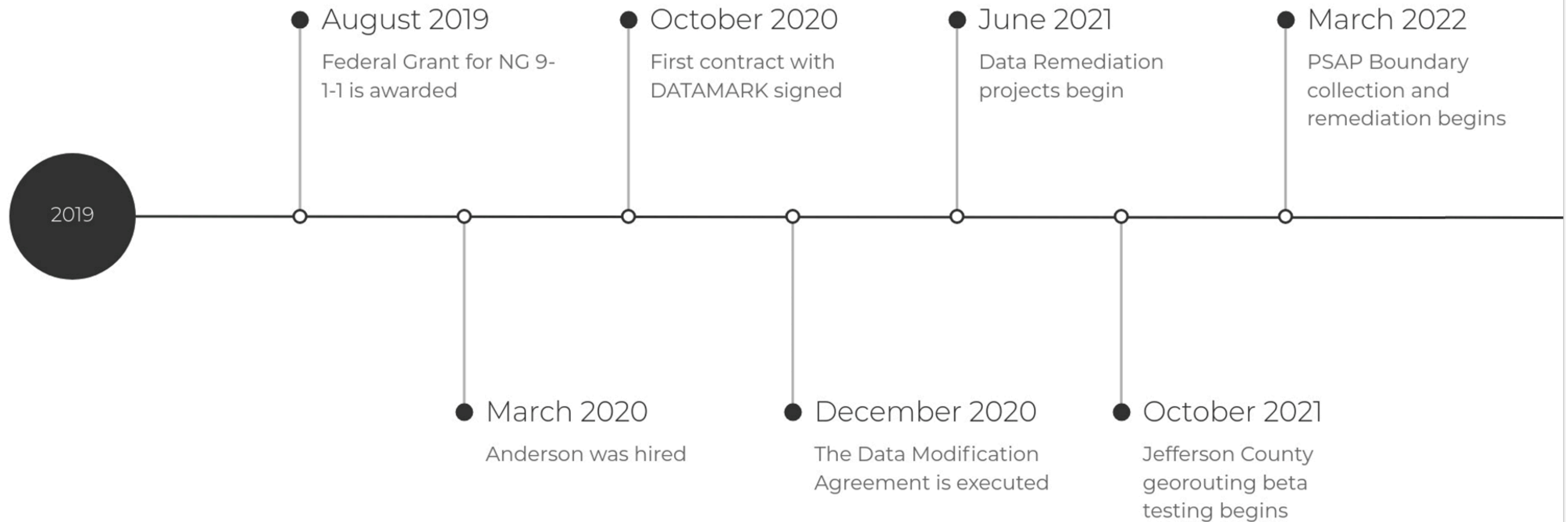
ALABAMA 9-1-1 BOARD USER CONFERENCE



ALABAMA 9-1-1 BOARD

UPDATES

An Abbreviated History of the Alabama 9-1-1 Board's GIS Program



An Abbreviated History of the Alabama 9-1-1 Board's GIS Program



An Abbreviated History of the Alabama 9-1-1 Board's GIS Program



The Current and Future Uses of GIS in Alabama 9-1-1



Current

Only PSAP boundaries are being used to route wireless calls.



Current

The location information used to route is obtained with a database dip.



Current

GIS data is handed off between the board and INdigital.



Future

All required layers can be utilized during any call routing.



Future

Location information will come with the call (PIDF-LO).



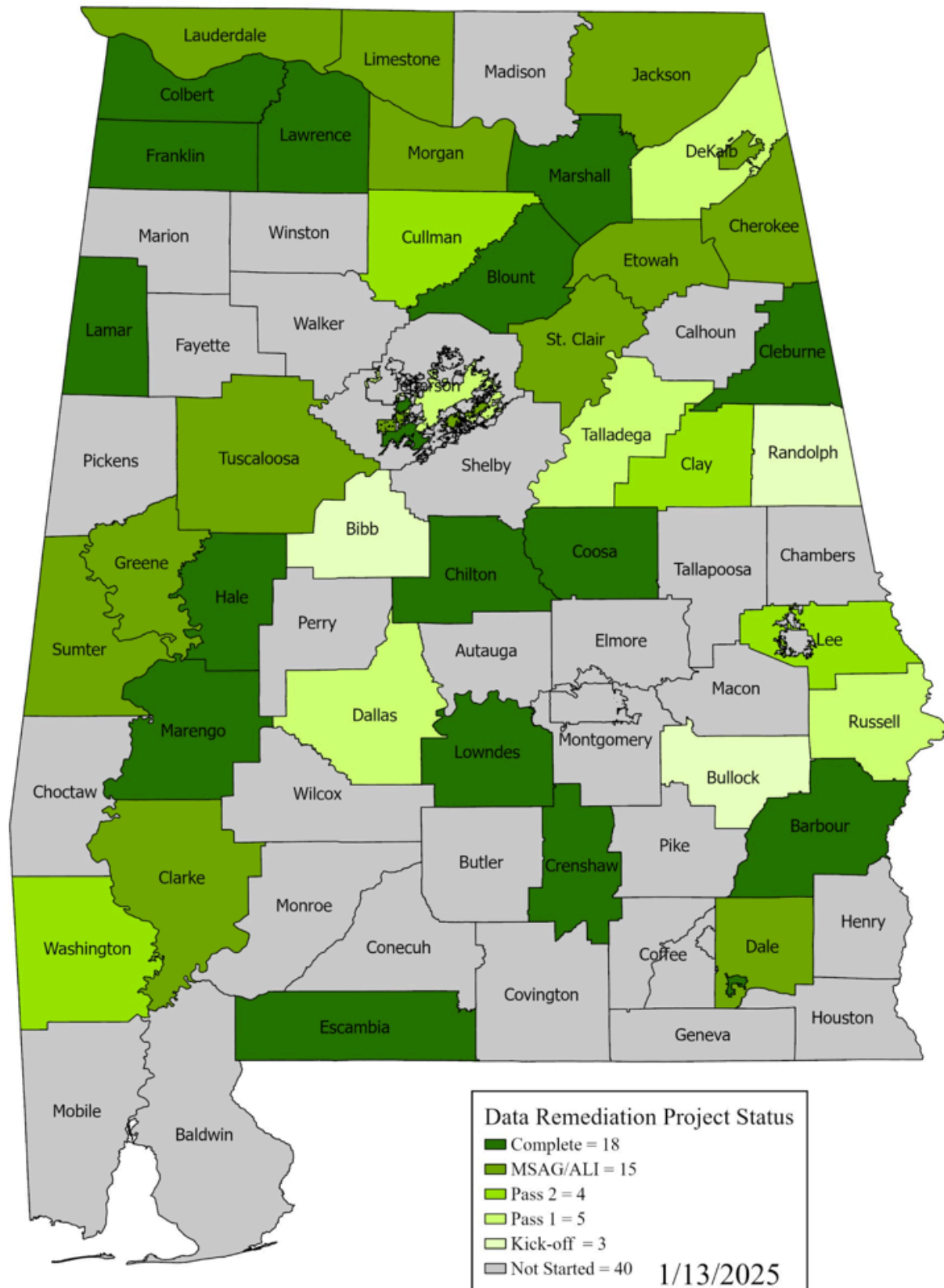
Future

GIS data will be passed via a spatial interface, where it will be stored and will then provision the other functional elements.

Credit: Rachel Morrison - INdigital

Statewide GIS Data Remediation Project

- INdigital provided minimum GIS data requirements for provisioning to core services
- DATAMARK Outlined 26 VEP validations over 4 key metrics corresponding to the data requirements
- Ongoing project to remediate GIS data to the requirements
- Requirements are not the entirety of the NENA i3 Standard for Next Generation 9-1-1



ALABAMA 9-1-1 BOARD USER CONFERENCE



ALABAMA 9-1-1 BOARD

UPDATES



**TWICE
MONTHLY
NEWSLETTER**



**ALABAMA 9-1-1 BOARD
USER CONFERENCE**



MyAlabama911 App

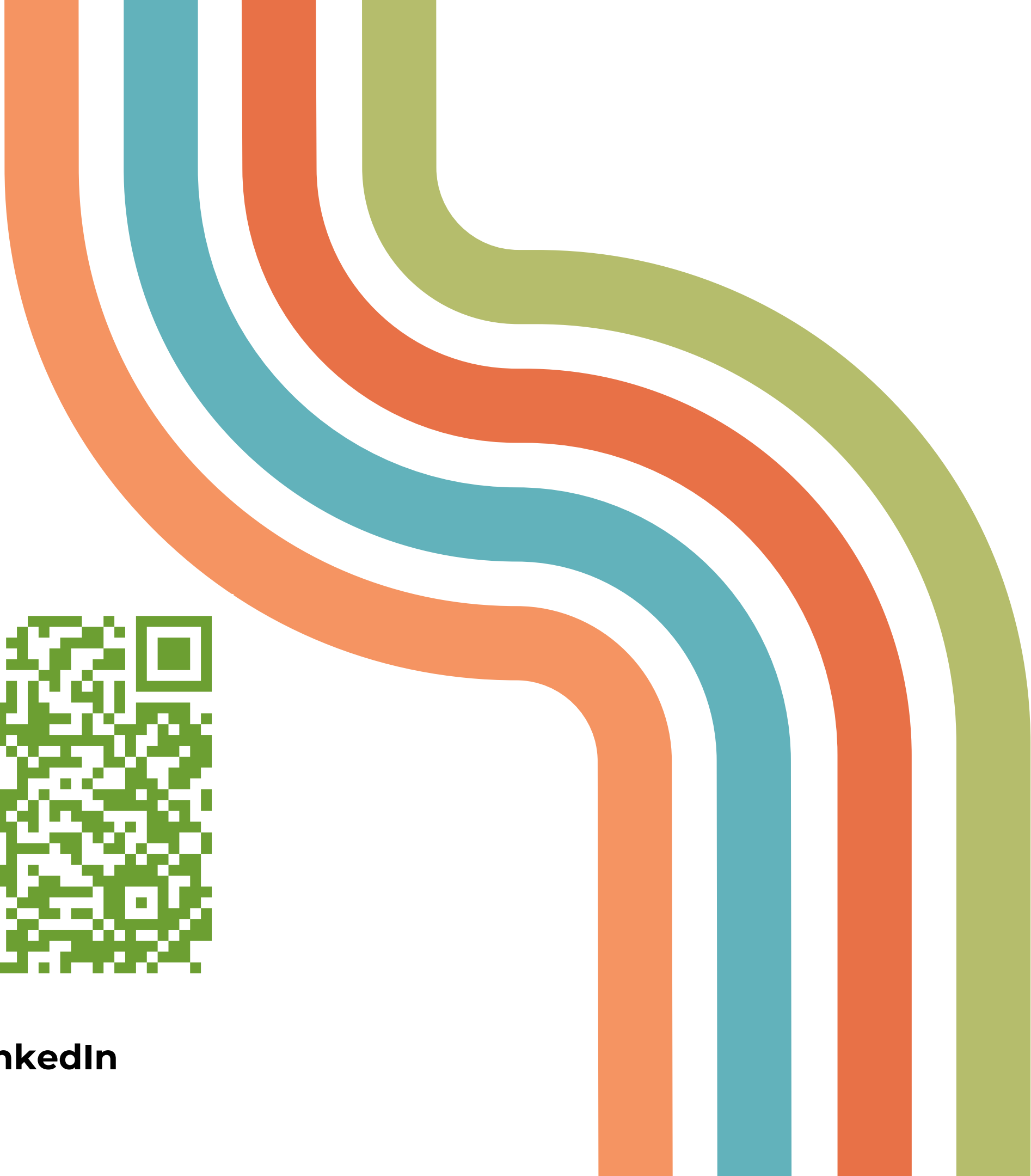
YouTube

FaceBook

Website



LinkedIn



TALK ABOUT IT TUESDAY WEBINARS

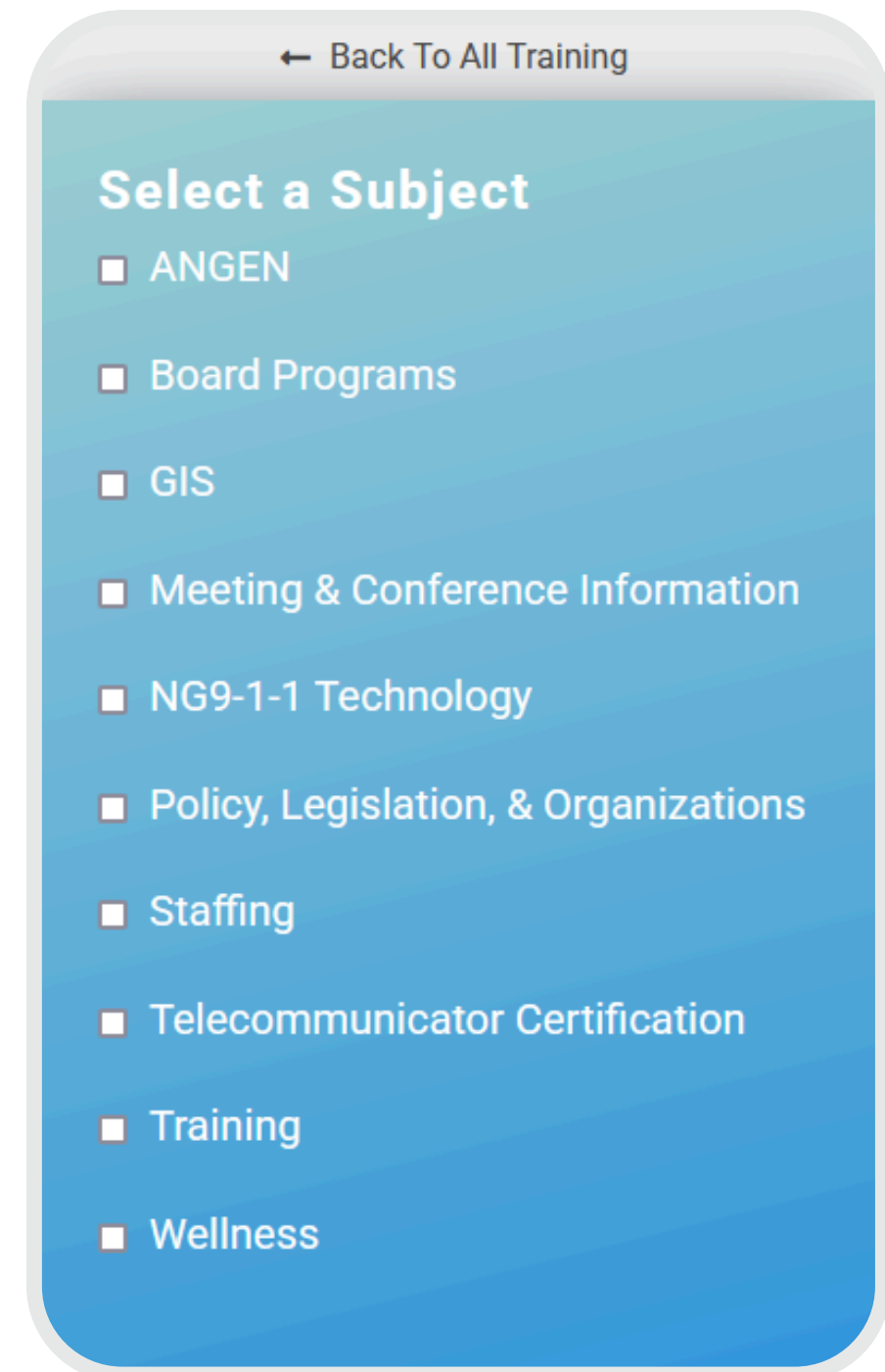
The second and fourth Tuesday of each month



Information about our next webinar
with login information



Talk About It Tuesday Replay



ALABAMA 9-1-1 BOARD
USER CONFERENCE

• TONIGHT •

DICE & DECEPTION

A Night of Magic and Luck

SPONSORED BY



• THANK YOU TO OUR SPONSORS •



• TITLE •

