



# ALABAMA 911 BOARD

**September 28, 2021**  
**Talk About It Tuesday**

# Introduction & Contact Information

## **Dana Nation**

**Program Coordinator for the Alabama 9-1-1 Board**

Email: [dana@al911board.com](mailto:dana@al911board.com)

Phone: 334-440-7911

## **Dan Wright**

**Deputy Director for Baldwin County 9-1-1**

Email: [dwright@baldwin911.org](mailto:dwright@baldwin911.org)

## **Charlie McNichol**

**Director for Mobile County Communications District**

Email: [cmcnichol@mccd911.com](mailto:cmcnichol@mccd911.com)



# what3words

what3words converts a  
3 word location to a GPS  
coordinate on a map

$$\begin{array}{c} \text{///highways.dove.tiptoes} \\ = \\ 34^{\circ}14.0322'\text{N}, 77^{\circ}52.6516'\text{W} \end{array}$$



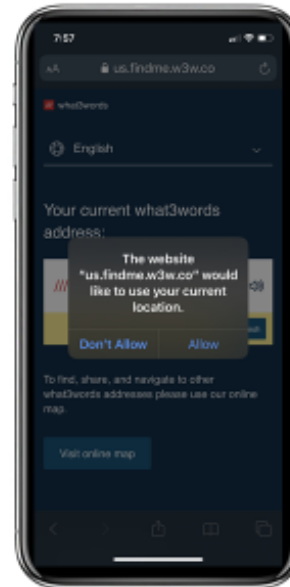
# Texting

How does the TEXT link to what3words work?

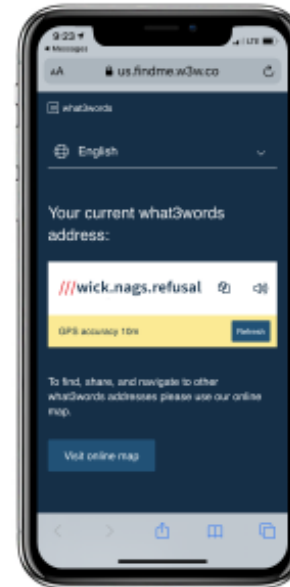
Telecommunicator sends  
TEXT with what3words FindMe  
link



Caller opens link  
provided in browser

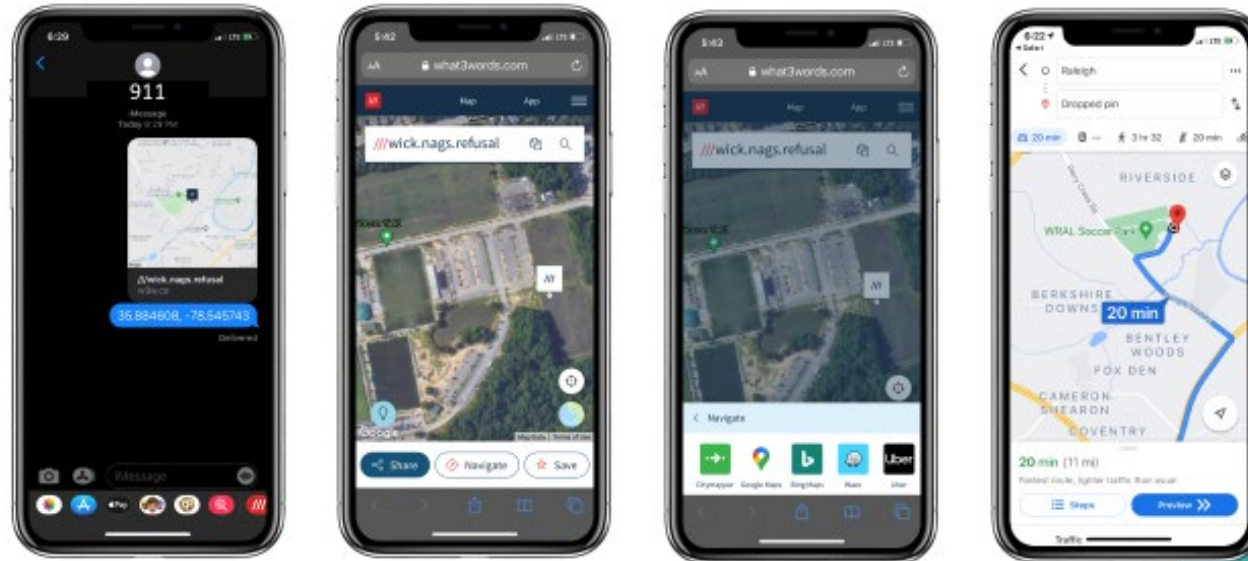


Caller reads out 3 words  
presented



# Sharing

Field responders can be sent a link to the what3words location



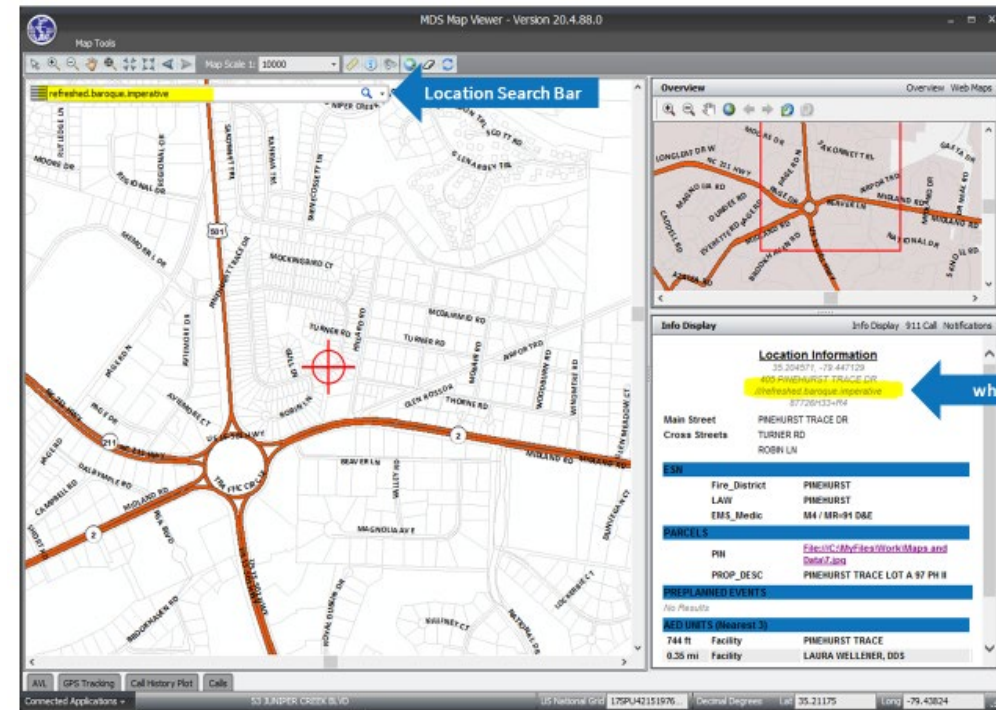
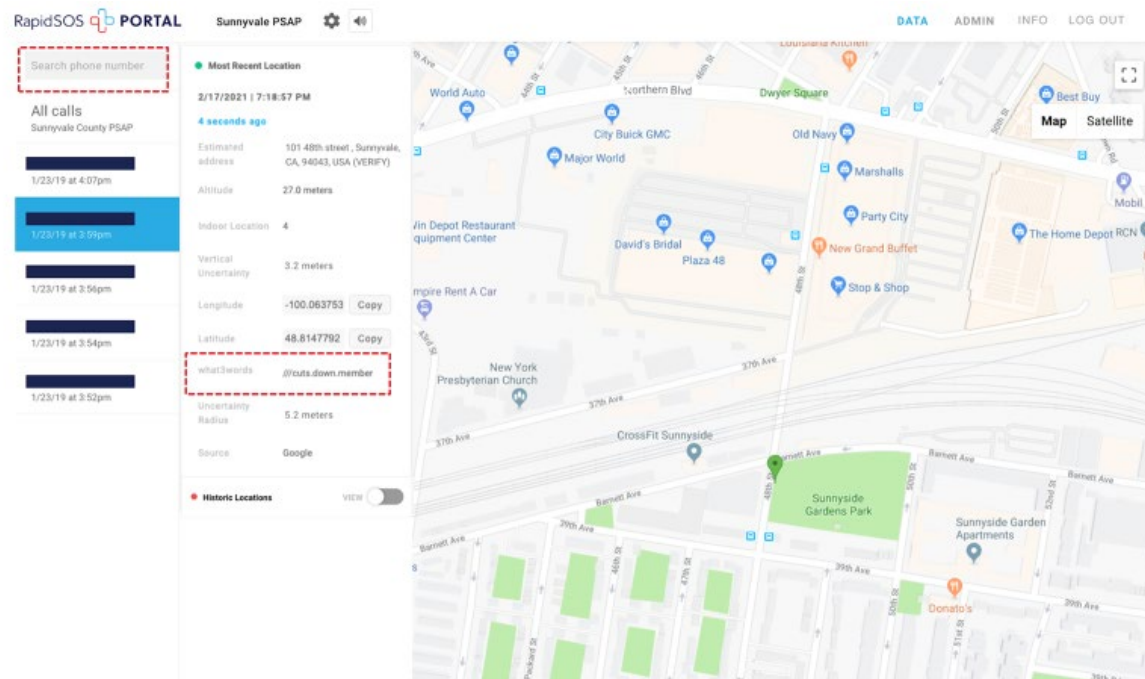
A 3 word location becomes a hyperlink in this format:  
[w3w.co/word1.word2.word3](https://w3w.co/word1.word2.word3)

23

23



# Integrations



Southern  
Software  
CAD



@alabama911board



Alabama 9-1-1 Board



@al911board



http://al911board.com





# Getting Started



For more information on how to get set up (FREE)

**Ashley@what3words.com**



Download the free what3words app to test it out!

43



@alabama911board



Alabama 9-1-1 Board



@al911board



<http://al911board.com>



# Questions

**Dana Nation**

**Program Coordinator**

for the Alabama 9-1-1 Board

[dana@al911board.com](mailto:dana@al911board.com)

Office: 334-440-7911

